

---

# Blast Resistant Glazing Design 2003 Version 1.0

Installation Guide

<http://www.StandardsDesign.com>

# Copyright Information

## **Blast Resistant Glazing Design 2003 Network, Installation Guide**

© 2001 Standards Design Group, Inc. All rights reserved.

This document is for information purposes only. Standards Design Group, Inc. makes no warranties, expressed or implied.

Other brand and product names are trademarks or registered trademarks of the respective holders. Microsoft is a registered trademark and Windows, Windows NT, Windows 2000 and the Windows logo, the Windows NT logo, and the Windows 2000 logo are registered trademarks of the Microsoft Corporation.

Information in this document is subject to change without notice and does not represent a commitment on the part of Standards Design Group, Inc. The software described in this document is furnished under a license agreement. The software may be used only in accordance with the terms of this agreement. It is against the law to copy the software on any medium except as specifically allowed in the license agreement. No part of this manual may be reproduced or retransmitted in any form or by any means, electronically or mechanically, including photocopying, recording, or information recording and retrieved systems, for any other purpose other than the purchaser's personal use, without the express written permission of Standards Design Group, Inc.

# Contents

<b>Copyright Information</b>	ii
<b>Contents</b>	iii
<b>Blast Resistant Glazing 2003 Product Support</b>	
Necessary Information for Technical Support	iv
Contacting Technical Support	v
Contacting Standards Design Group	v
<b>Chapter 1 Overview</b>	
Introduction	1-1
Installation Overview	1-1
<b>Chapter 2 Installation Walkthrough</b>	
Server Installation Steps	2-1
License Installation Steps	2-1
Client Installation Steps	2-1
<b>Chapter 3 Changes in the Network Version</b>	
Blast Resistant Glazing Design 2003 NW	3-1
License Manager	3-1
<b>Chapter 4 Advanced Information</b>	
Installed Files	4-1
Registry Entries	4-2
Testing BRGD2003 NW on a temporary server	4-3
Moving BRGD2003 NW from a temporary server to a production server	4-3
<b>Chapter 5 Trouble-Shooting</b>	
Error Message, Possible Causes, and Solutions	5-1

# Blast Resistant Glazing Design 2003 Product Support

## Necessary Information for Technical Support

The technical support staff at Standards Design Group (SDG) likes to provide detailed and accurate answers to customers' questions. In order to do so, its representatives will need the following information:

1. Your full name and the name of the registered user, if different.
2. Your phone and fax number or an email address.
3. The version number. This can be found in the *About Box*, which you can quickly access by clicking the *About Blast Resistant Glazing Design* menu selection under the *Help Menu*.
4. The system information of your computer, including the make and model of the machine, the operating system, amount of memory, and the system resources.
5. A detailed description of the problem. Describe any error messages exactly as they appear. Please list the steps and conditions that led to the problem.

## Contacting Standards Design Group

This section contains information on how to contact SDG.

### Wind Loads on Structures Network via Internet or email

Description	Phone, Address
SDG WWW site	<a href="http://www.StandardsDesign.com">http://www.StandardsDesign.com</a>
Technical support via email	Tech@StandardsDesign.com
Suggestions for future improvements in WLS	Info@StandardsDesign.com

### Technical Support

Description	Phone, Address
Phone requests for technical assistance, Monday through Friday 8:00 AM to 5:00 PM Central Time	Phone (800) 366-5585
Fax requests for technical support	FAX (806) 792-7069
Mail requests for technical support	Mailing Address Standards Design Group, Inc. 3417 73rd St., Suite K-3 Lubbock, TX 79423

### Sales, Marketing, and Licensing

Description	Phone, Address
Telephone orders or requests for information about all SDG products	Phone (800) 366-5585
	FAX (806) 792-7069
	Email Info@StandardsDesign.com
	Address



# Part 1 Overview

## Introduction

The network version of Blast Resistant Glazing Design 2003 (BRGD2003-NW) provides an easy to use alternative to having one computer to which many users must go to perform Blast Resistant Glazing Calculations. The network version automatically limits the number of users to the number of licenses you have purchased. After installation of the program on individual user computers, the users interact with the software in the same manner as with the standard version of the software. The only exception occurs when all of the licenses are in use. In this case, the program notifies the user that all the licenses are in use and suggests attempting access later. Since the program requires no special server services, the user can make the server installation on any computer, not necessarily a computer running Windows™ NT Server 4.0 or Windows™ 2000 Server, with the exception that everyone using the program must have network access to the computer. This software uses very little server resources since the individual user computers run the software from their memory. In addition to the main BRGD2003-NW program, a second program, BRGD2003 - License Manager, maintains the user files that keep track of the use of the licenses.

## Installation Overview

### **Phase 1 Server Installation Program:**

The Server Installation Program located on the CD, copies the Client Installation Program and the required program files into a specified directory on the server. The Server Installation Program does not copy files to the system directory of the server. It makes minimal entries to the server registry. Chapter 4, Advanced Information, contains a list of the files and the registry entries to the server. After completing installation, all users of the program must have read/write access to the install directory. Since the users access the program through their Start Menu, minimal risk exists for files to be mistakenly deleted or damaged. If additional security is required, Chapter 4, Advanced Information, contains a list of individual files to which users must have read/write access.

### **Phase 2 License Installation Program:**

The Server Installation must be completed before running the License Installation Program. The server manager must run the License Installation Program, located on the CD-ROM, on the server. The License Installation Program attempts to locate the directory to which the program has been installed on the server and then adds the License Files to the directory. The License Installation must be completed before the program will run on the client computers.

**Phase 3 Client Installation Program:**

The Client Installation Program, located in the server's directory, is run from the client computer. The Client Installation Program copies the required dependency files to the client computer's Windows™ system directory and creates a shortcut in the Start Menu. The shortcut references the program files in the directory on the server. The actual executable program remains on the server. The shortcut references the directory from which the Client installation Program runs; therefore, the program files must remain in this directory. After completing program installation on all client computers, the server manager may remove Client Installation files from the directory. However please exercise caution to not remove any files required for the program to run properly (see list in Chapter 4 Advanced Information). If the user moves or deletes the Client Installation files, replace them before adding any more clients.

# Chapter 2 Installation Walkthrough

## Server Installation Steps

1. Insert CD-ROM into disk drive.
2. Click on the Start button, then click on Run.
3. Type D:\Setup.exe then click OK (D denotes the drive letter for the CD-ROM disk drive).
4. Follow installation instructions.
5. After completing installation, assign Read/Write user rights in the install directory.

## License Installation Steps

1. Insert the CD-ROM into the disk drive.
2. Click on the Start button and then click on Run.
3. Type D:\Setup.exe and then click OK (D denotes the drive letter for the CD-ROM disk drive).
4. Follow the installation instructions.

### Notes:

If the License Installation Program does not find the correct directory on the server, click on the Back button in the dialog box to return to the previous dialog box and then press the Browse button. Select the path to the Server Install directory. Then click on the Next button if the install dialog still returns an invalid path message. The Server Installation may not have been completed correctly. Try reinstalling the Server Installation Program and then rerun the License Installation Program.

## Client Installation Steps

1. Using the Client computer, go to the appropriate directory on the Server.
2. Locate and double click on the Setup.exe file in this directory. (*This is not the Setup.exe on the original CD.*)
3. Follow the Installation instructions.
4. Reboot the computer if required.



# Chapter 3 Changes in the Network Version

## Blast Resistant Glazing 2003 NW

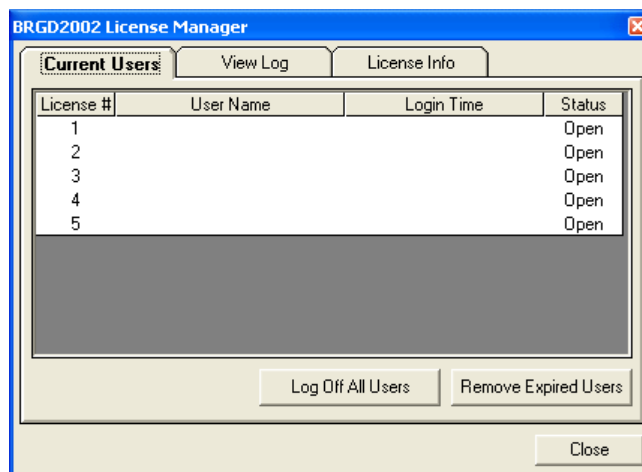
Besides the addition of the license verification functionality, the network version works the same as the standard version.

## License Manager

The License Manager contains license information, shows a log of program use, and provides a list of current program users. No shortcut exists for this program since it will not be used very often; therefore, to access this program go to the directory on the server and double click on the BRGD2002NWMgr.exe file.

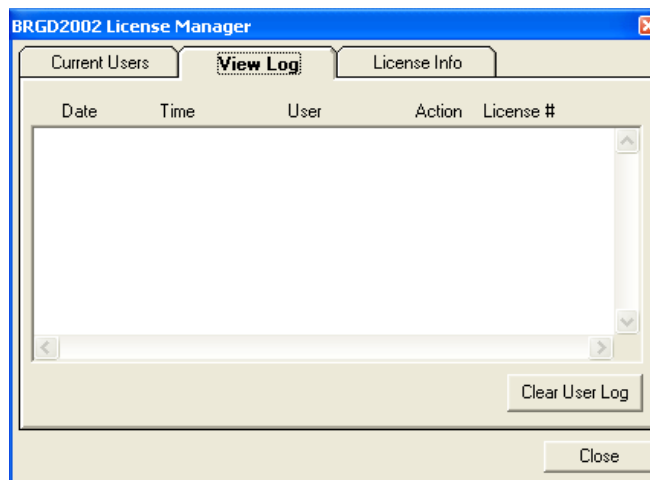
### Current Users Tab

The Current Users tab contains a list of the licenses and the status of each license (i.e. active or open). Additional information includes the users logged into the program and the date & time of logging into the program. Buttons located on this tab allow for the removal of all users and the removal of expired users.



### View Log Tab

The View Log tab shows the use history of the program. More specifically, it indicates the date and time the users logged in and out of the program and the licenses they used. The Clear User Log button clears the user log.



## License Information Tab

The License Information tab lists the owners of the license and the number of licenses.





# Chapter 4 Advanced Information

## Installed Files

### Files copied to the installation directory on the server

Category	File Name	Size	Description
Client Install	_inst32i.ex_	289 K	Required for Client Install
	_ISDe;.exe	27 K	Required for Client Install
	_Setup.dll	34 K	Required for Client Install
	_sys1.cab	171 K	Required for Client Install
	_sys1.hdr	4 K	Required for Client Install
	Data.tag	13 K	Required for Client Install
	data1.cab	4 K	Required for Client Install
	data1.hdr	1 K	Required for Client Install
	lang.dat	2,052 K	Required for Client Install
	layout.bin	5 K	Required for Client Install
	os.dat	22 K	Required for Client Install
	Readme.txt	1 K	Required for Client Install
	setup.exe	72 K	<b>Client Setup Program</b>
	setup.ini	1 K	Required for Client Install
	setup.ins	58 K	Required for Client Install
setup.lid	1 K	Required for Client Install	
Program Files	Escarp.jpg	44 K	Required for WLSNW to Run
	Ridge.jpg	50 K	Required for WLSNW to Run
	alaskamap.jpg	93 K	Required for WLSNW to Run
	VelMapLinesColor.jpg	420 K	Required for WLSNW to Run
	WLSNW.exe	3,796 K	<b>Wind Loads on Structures NW Program</b>
	WLSMgr.exe	44 K	<b>User License Manager Program</b>
	Wind load.cnt	1 K	Required for WLSNW to Run
	Wind load.hlp	5,828 K	Required for WLSNW to Run
	inetwh32.dll	53 K	Required for Help File
	Roboex32.dll	310 K	Required for Help File
	Slic.cfg	48 B	Required for WLSNW to Run
	UserLog.log	2 B	Required for WLSNW to Run
	WLSNT.rsu	283 B	Required for WLSNW to Run

### Files copied to the system directory on the server

Category	File Name	Size	Description
None			

**Files copied to the installation directory on the client computer**

Category	File Name	Size	Description
None			

**Files copied to the system directory on the client computer**

Category	File Name	Size	Description
Dependency	MSVBVM60.dll	1,356 K	Required for WLSNW to Run
	ComCat.dll	21 K	Required for WLSNW to Run
	MsFlexgrd.ocx	238 K	Required for WLSNW to Run
	ComDlg32.ocx	137 K	Required for WLSNW to Run
	Mscmctl.ocx	1,041 K	Required for WLSNW to Run
	Tabctl32.ocx	204 K	Required for WLSMgr to Run

**Registry Entries**

**Entries to the server registry**

Root Key	Key	Value
HKEY_LOCAL_MACHINE	\Software\Microsoft\Windows\CurrentVersion\Uninstall\Wind Loads on Structures NW (Server)\Display Name	Wind Loads on Structures NW (Server)
	\Software\Microsoft\Windows\CurrentVersion\Uninstall\Wind Loads on Structures NW (Server)\UninstallString	C:\WINDOWS\IsUninst.exe -f"C:\Program Files\Wind Loads on Structures NW\Uninst.isu"
	\Software\Microsoft\Windows\CurrentVersion\App Paths\WLSNW.exe\Default	C:\Program Files\Wind Loads on Structures NW\WLSNW.exe
	\Software\Microsoft\Windows\CurrentVersion\App Paths\WLSNW.exe\Path	C:\Program Files\Wind Loads on Structures NW
	\Software\Standards Design Group, Inc\Wind Loads on Structures NW\1.0.0	

**Entries to the client registry**

Root Key	Key	Value
HKEY_CLASSES_ROOT	\.wls	WindLoads.DesignFile
	\WindLoads.DesignFile\shell\open\command	(Install Path to Server)
HKEY_LOCAL_MACHINE	\Software\Microsoft\Windows\CurrentVersion\Uninstall\Wind Loads on Structures\Display Name	Wind Loads on Structures
	\Software\Microsoft\Windows\CurrentVersion\Uninstall\Wind Loads on Structures\UninstallString	C:\WINDOWS\IsUninst.exe -f"C:\Program Files\Wind Loads on Structures\Uninst.isu"
	\Software\Microsoft\Windows\CurrentVersion\App Paths\WindLoads.exe\Default	C:\Program Files\Wind Loads on Structures NW\Windloads.exe
	\Software\Microsoft\Windows\CurrentVersion\App Paths\Windloads.exe\Path	C:\Program Files\Wind Loads on Structures
	\Software\Standards Design Group, Inc\Wind Loads on Structures\1.0.0\Company	(User Defined)
	\Software\Standards Design Group, Inc\Wind Loads on Structures\1.0.0\Name	(User Defined)
\Software\Standards Design Group, Inc\Wind Loads on Structures\1.0.0\Recent Files\	0 to 3	

## **Testing Blast Resistant Glazing 2003 NW on a Temporary Server**

You can perform the Server Installation on a temporary server for testing the program on your network. Simply run the installation procedures outlined in Chapter 2.

## **Moving Blast Resistant Glazing 2003 NW from a Temporary Server to a Production Server.**

To transfer the Server Installation from a temporary server to a production server, copy the Server Installation directory and paste it on to the production server. Since the client computers only reference the files on the server, only the shortcut path must be updated. If the same server installation path is maintained when you transfer the files to the production server, then the computer name in the shortcut will need to be changed. For example, if the temporary server name is SDGtemp and the production server name is SDG1 then the shortcut on the client computer must be changed from  
\\Samtemp\c\Program Files\Blast Resistant Glazing 2003 NW\BRGD\_2003\_STD.exe to  
\\Sam1\c\Program Files\Blast Resistant Glazing 2003 NW\ BRGD\_2003\_STD.exe



## Chapter 5 Trouble-Shooting

<b>Error Message</b>	<b>Possible Cause</b>	<b>Solution</b>
Unable to locate license information.	The License Installation has not been completed.  The Slic.cfg file has been moved from the server installation directory.	Run the License Installation program.  Move the SLic.cfg file back to the server installation directory or run the License Installation program again.
All Licenses are full but no one is currently using the program.	The last user was not successfully logged out of the program.	Use the WLS Licence Manager to remove all users.